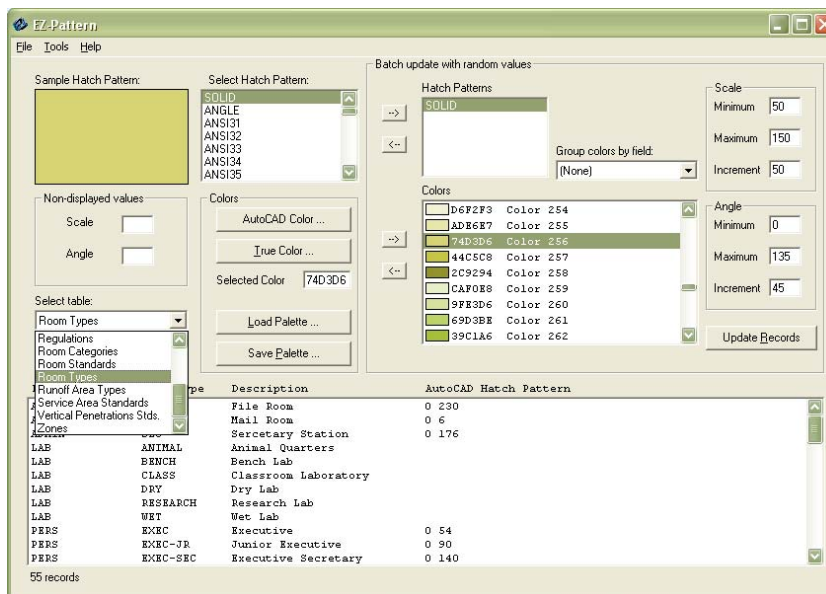


Take the Guess Work Out Of Creating Hatch Patterns.

Assigning AutoCAD hatch patterns within ARCHIBUS can present a challenge. Choosing hatch patterns, colors, angles, and scales for your departments, room categories, etc. is often an imprecise and time-consuming task. That's why we created **EZ-Pattern**, a powerful, yet simple-to-use program that streamlines the selection and assignment of ARCHIBUS/AutoCAD hatch patterns.

Assign Patterns in Seconds.

An intuitive user interface lets you to visually select the patterns and colors you want to use within your hatched facilities drawings. You can also add scale and angle settings, enabling the creation of hundreds of unique pattern combinations. Simply select the table to which you want to update and **EZ-Pattern** does the rest. What's more **EZ-Pattern** will work with any table containing the ACAD Hatch Pattern field; even custom tables.



EZ-Pattern includes a variety of productivity-enhancing features. You can use pre-defined true-color and AutoCAD color palettes, or create your own. You can filter which records get updated. You can also run **EZ-Pattern** in batch-mode, enabling hatch pattern assignment as part of your HR/Finance download processes.

Increase Productivity.

If your organization experiences constant change, you need **EZ-Pattern**. You will speed up the hatch pattern assignment process, giving you more time for more pressing matters.

To order **EZ-Pattern**, or to see a demonstration, contact your ARCHIBUS Business Partner or call CAFM Techniques at (650) 344-1002, or via email at info@cafmetechniques.com.